



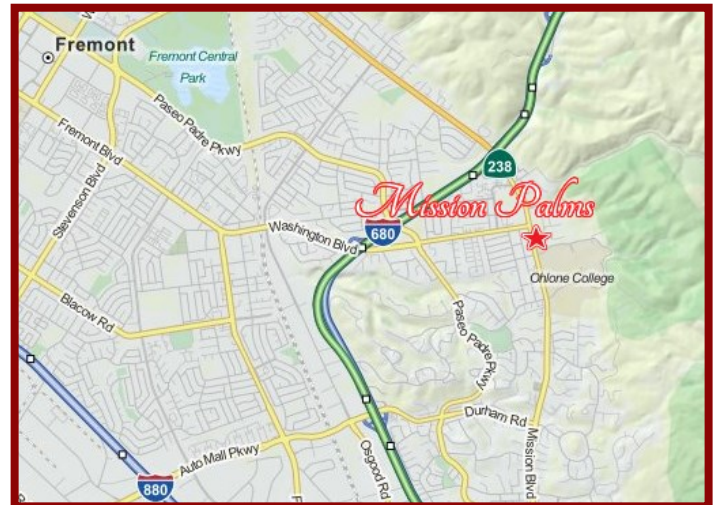
**±864 - 6,645 Sq. Ft.
Retail/Office Spaces for Lease**

Mission Palms ♦ 43360 Mission Blvd. ♦ Fremont, CA



PROPERTY PROFILE

Location	43360 Mission Blvd., Fremont, CA
Space Available	±1,165 Sq. Ft.
Site Size	± 0.45 Acres
APN	513-380-48
Year Built	Occupancy in Spring 2016
Property Zoning	CC / P-2002-63 (HOD)
Parking	28



Located on Mission Blvd. between Ohlone College and Mission San Jose, Mission Palms will continue a tradition of quality and excellence in architectural detail, building construction and management. The center will reflect the quality, character and professional management of the DEI-owned *Plaza Los Olivos*, located immediately to the south of the project, and will feature enhancements such as a stone veneer façade, pavers and upper floor metal awnings along the street elevation.

- ♦ High and continuous traffic counts
- ♦ Close to Smith Performing Arts Center
- ♦ Easy access to I-680 and employment centers
- ♦ Ample on and offsite parking with additional motorcycle and bicycle parking
- ♦ Close to Lam Research, Lexar Media and Abgenix
- ♦ Surrounded by prestigious Mission San Jose residential developments
- ♦ Call for pricing and tour information



For more information, please contact:

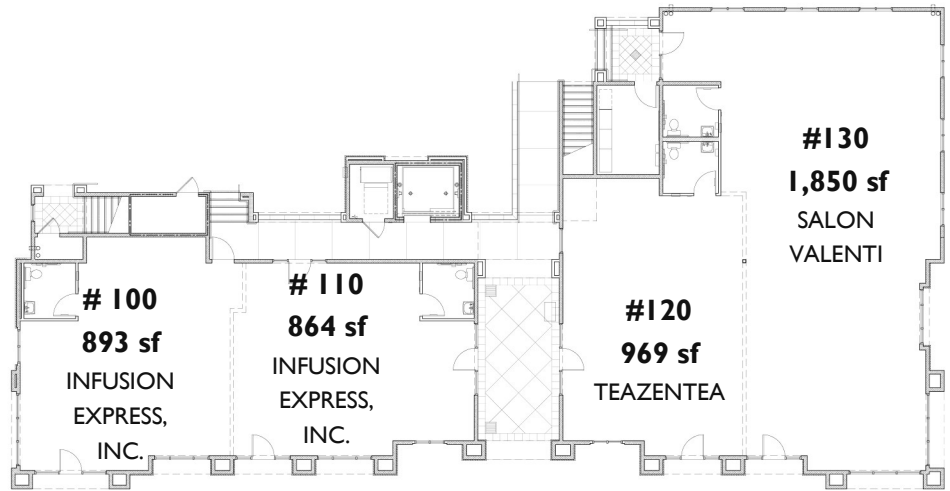
James Wilson, PROPERTY MANAGER
(408) 898-0659
james@dutraenterprises.com

Dutra Enterprises, Inc.
43360 Mission Blvd., Ste. 230
Fremont, CA 94539
www.dutraenterprises.com

±864 - 6,645 Sq. Ft. Retail/Office Spaces for Lease

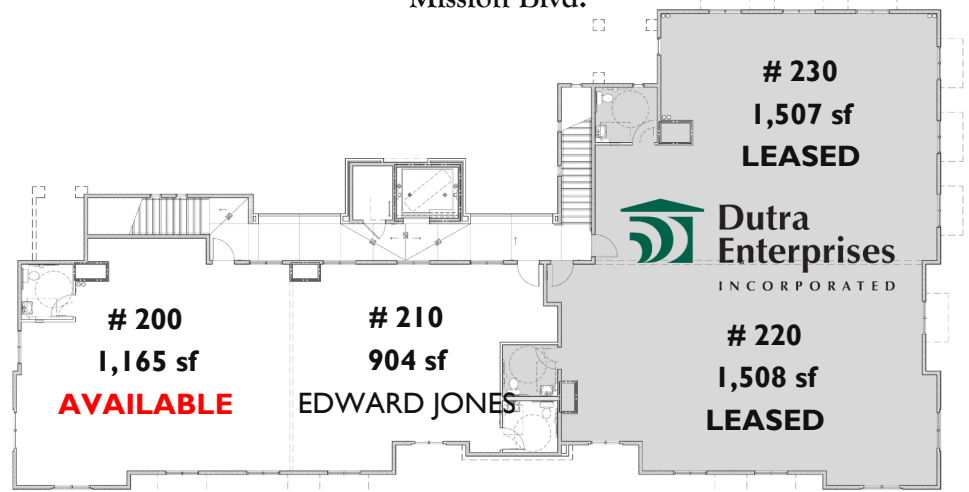


1st Floor



Mission Blvd.

2nd Floor



Mission Blvd.



Front Elevation (East)



Rear Elevation (West)

DEMOGRAPHICS:

	1 Mile	3 Mile	5 Mile
2014 Total Population:	10,203	69,439	161,305
2014 Total Households:	3,116	22,163	54,330
2014 Median Household Inc:	\$147,611	\$114,811	\$100,803
2014 Average Age:	40	39	38
2014 Median Home Value:	\$927,919	\$730,398	\$617,969
2013 HHs Income > \$50K	2,378	16,783	40,356
2013 HHs Income > \$100K	1,953	11,910	25,848

Sources: CoStar 2014 Estimates / LoopNet 2013 Estimates