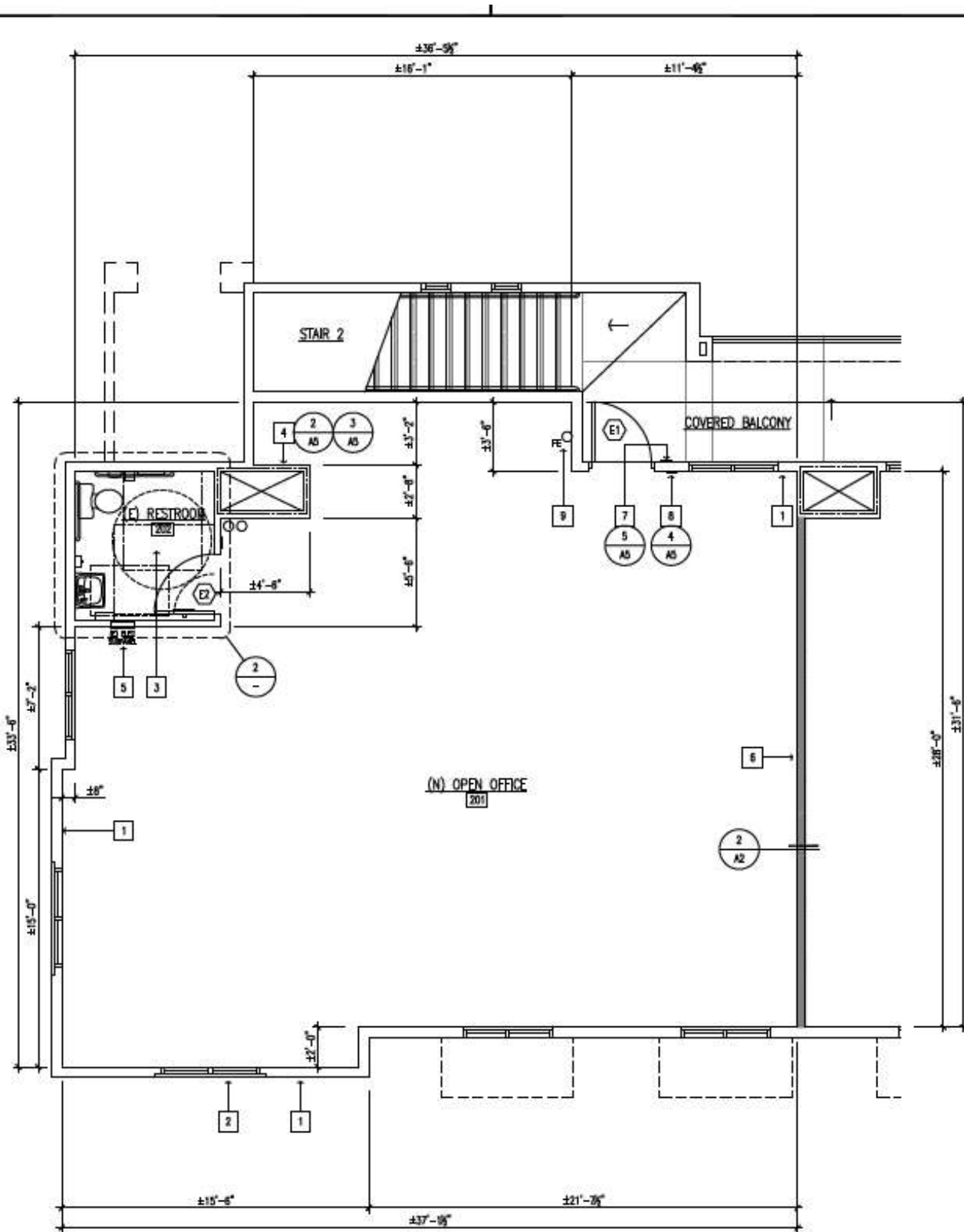


- This sheet is part of a set and is not to be used alone.
- This sheet is not to be used for construction unless the Architect and/or Engineer's stamp and official signature appear on the drawings.
- These plans, and plans hereon, or instruments of service are issued by Hensel & Phelps Architects, and the fee was on this project only. Reproduction and/or distribution without the prior written consent of Hensel & Phelps Architects is strictly prohibited.
- Copyright Hensel & Phelps Architects 2017.

MISSION PLAMS SUITE 200 T.I.
43360 MISSION BOULEVARD, SUITE 200
FREMONT, CA 94539



DATE	BY
5-23-17	RY
REVIEW SET	RY
6-02-17	RY
REVIEW SET	RY
6-15-17	RY
FINAL REVIEW	RY
6-20-17	RY
BLOG DEPT	RY

OWNER	RY
DESIGNER	DA
JOB #	17033
FILE	FL0T-D

PARTIAL FLOOR PLAN, INTERIOR ELEVATIONS, SCHEDULES

A3

NEW PARTIAL FLOOR PLAN

1/4"=1'-0"